
TDC Driver Software Installation Manual



All rights reserved. No part of this manual may be reproduced without the prior permission of Surface Concept GmbH.



Surface Concept GmbH

Am Sägewerk 23a
55124 Mainz
Germany

phone: +49 6131 62716 0
fax: +49 6131 62716 29
email: info@surface-concept.de
web: www.surface-concept.de

User Manual for the
TDC Driver Software Installation
Manual Version 2.3
Printed on 2020-02-18



Driver & Software Installation

!
Note

This installation routine describes the installation of the Surface Concept TDC Device Driver and Software for Windows 7, 8.1, 10 (64bit) operation system. Please contact Surface Concept in case that you need support for any other Windows operation system.

!
Note

Please install the driver and software first and then switch on the TDC.

- The device driver and software can be found on a storage medium (USB stick, CD etc.) which is part of the delivery of the device itself.
- Connect the storage medium to your PC.
- The installer file can either be found in the main folder of the storage medium or in a sub-folder named "device driver", depending on the specific installer layout (which comes either as a single complete installer package for device driver, software, documentation etc. or only for the device driver with separate folders for software, documentation etc.
- Execute the installer file manually to start the driver/ software installation.



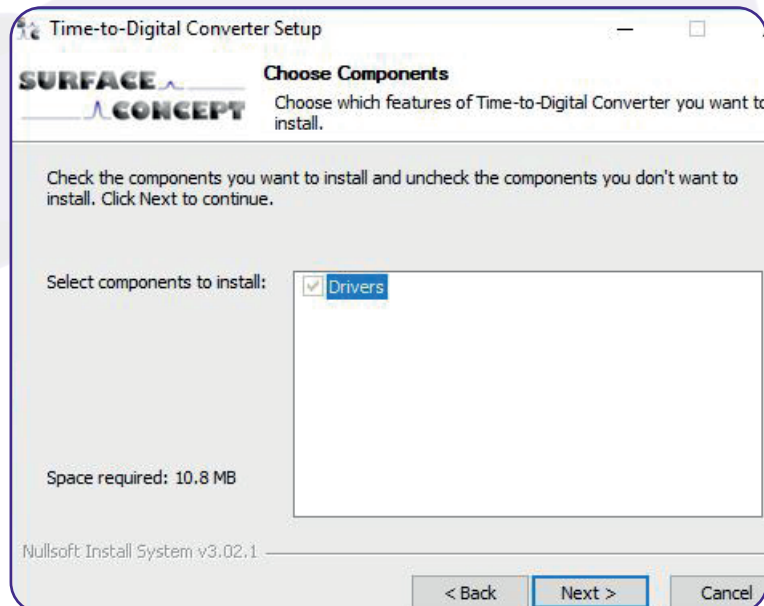
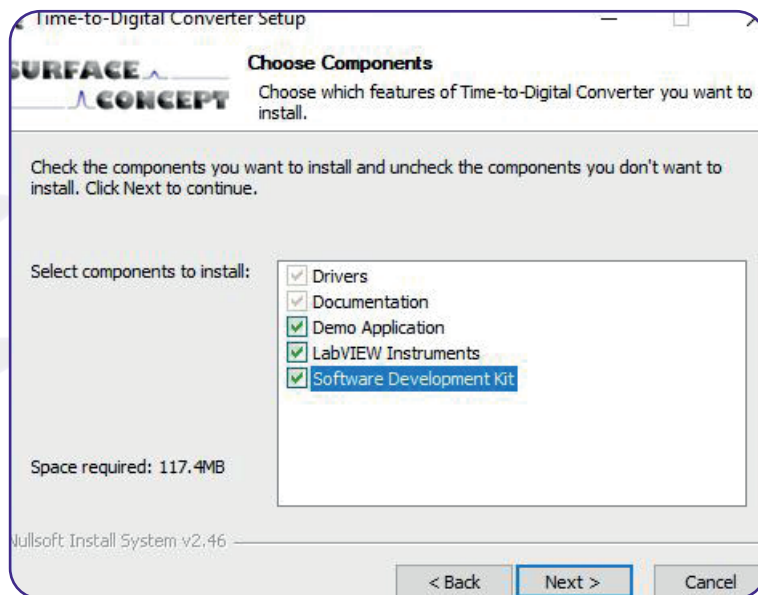
- The installer starts with opening the main window.
- Click "Next" to continue the installation.



- Accept the License Agreement by clicking on "I Agree".

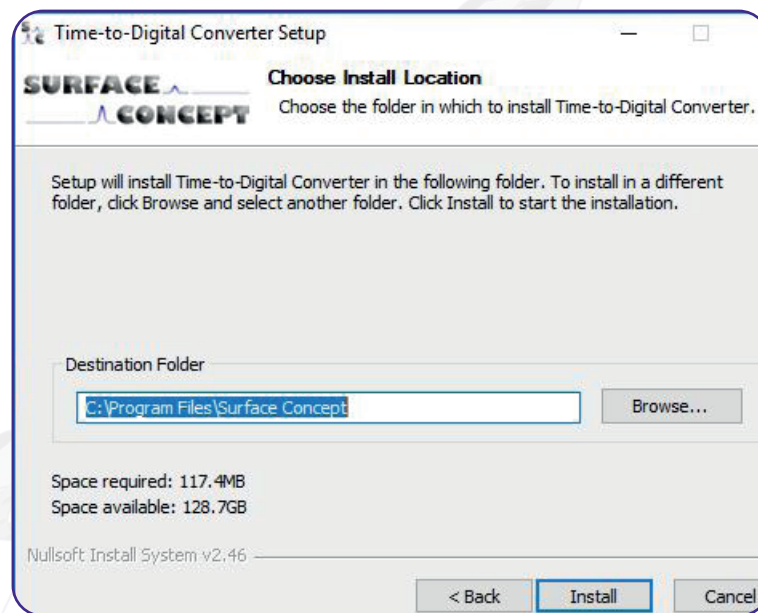


- The components which will be installed are depending on the specific installer package.
- In case of the single complete installer package, some components are fixed (device driver and documentation), while other can be selected manually in addition (e.g. software application). The number of components which can be selected individually can vary between different installer packages.
- There is only one, fixed component, in case of the separate device driver installer.

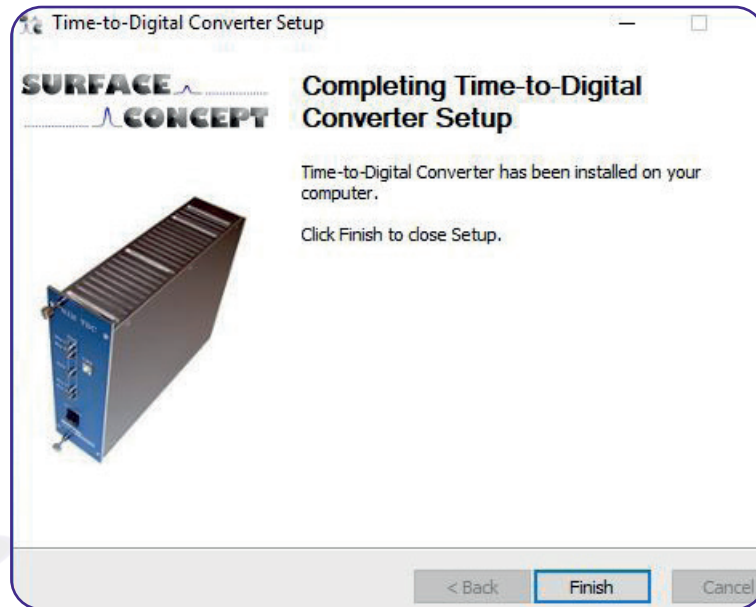


- Continue with "Next".

- In case of the single complete installer package, the installer is asking for a path the software should be installed to. It recommends a path in the “Program Files”-Folder. Browse for the specific folder or type it in the field “Destination Folder”, if a different destination is preferred.
- In case of the separate device driver installer, there is no possibility for selecting an installation path. Here the additional separate folders for software, documentation etc. have to be copied manually to a preferred folder on the User-PC.
- Continue with “Next”.



- The installation of the software and the drivers is in progress. The “Installation Complete” window will be shown when the installation process has been completed.
- Proceed with the “Next”-button to finish the installation.
- The installation is now complete. Proceed with the “Finish”-button to close the installation program.



- After the installation is complete, the TDC can be connected to the PC via the USB cable (part of the delivery) and can be switched on.
- Windows will detect the TDC as new USB device within a couple of seconds and the device will be ready to use.

Microsoft Redistributable Packages

The TDC software needs certain dlls from different redistributable packages from Microsoft. It is not uncommon that those packages are already installed on the User-PC, as they are also often used by other software applications. Therefore we recommend to first start the software without installing the redistributable packages. In case that the software won't start, the reason can be the missing dlls. In this case we recommend to install the both redistributable packages, which can be found on the storage medium in a sub-folder named "redistributable packages". Please install both existing packages (vc_redist.x64.exe and vcredist_x64.exe), as both packages provide different dlls which are needed.

